

SHEET 4 - DESIGN NOTES

1. Tree planting builds on this area as a transitional space where the view of the front beach is revealed as you come around the corner. Tree planting design to enhance this experience.
2. Proposed large Moreton Bay Fig tree becomes a place marker. This iconic tree will frame the initial view of the coast upon arriving as a pedestrian and provide a natural play opportunity. Spacing of these trees is large enough that they will not impact the prominence of the Norfolk Island Pines.
3. Copse of low height species to provide shady space around tables and chairs with less impact on views.
4. Infill Norfolk Island pines on same alignment as existing. Existing alignment offset from sea wall and spacing's vary - proposed trees to work in as best as possible with this.
5. Proposed trees build on existing shady enclosed node and plan for succession of weedy species.
6. Trees allow for future upgrade or extension of play space and will provide shade from north and west.
7. Garden bed provides improved growing conditions for new Moonah for long term succession.
8. Increased tree planting along top of hill enhances the dramatic and iconic natural amphitheatre feel of the grass slope.
9. Slope kept clear to ensure heritage protected Norfolk Island pines are still celebrated/privileged.

THIN EXISTING WEED SPECIES IN THIS AREA RETAINED AND SEASONALLY THINNED AS PROPOSED TREES TO ESTABLISH

THE ESPLANADE

BELL STREET

GB 4-1 MIX 1 139m²



A	FINAL DRAFT	PW	3/08/2021			
B	FINAL VERSION	PW	23/08/2021			
REV	DESCRIPTION	BY	DATE	REV	DESCRIPTION	BY



Pete Wilson
Landscape
Architect
Barron Heeds
VIC 3227
AUSTRALIA
0433 326 247
peter@pwla.com.au
www.pwla.com.au

CLIENT
GREAT OCEAN ROAD COAST AND PARKS AUTHORITY

PROJECT
TORQUAY TREE PLAN

TITLE
TREE & REVEGETATION PLAN

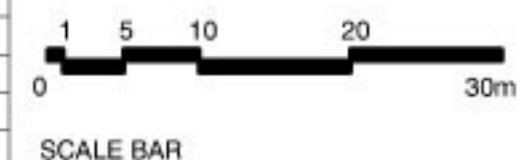
CREATED	Feb-21	SCALE	A1 1:500
STATUS	DRAFT	A3 1:1000	
DRAWN	PW	CHECKED	DS
APPROVED	PW	JOB No.	2101
DRAWING No.	SHEET 4	REV	B

SHEET 5 - DESIGN NOTES

1. Cope of low - medium height native species build on existing exotic canopy to provide shady space around tables and chairs.
2. Infill Norfolk Island pines on same alignment as existing. Existing alignment offset from sea wall and spacings vary - proposed trees to work in as best as possible with this.
3. Trees allow for future upgrade or extension of play space and may provide shade from north and west if they grow large enough.
4. Proposed Moonah Woodland garden beds are considered the best method for getting long term native canopy and shade in this exposed hill-top. Larger stock also proposed to aid public perceptions following removal of large cypress.
5. Garden bed provides improved growing conditions for existing Moonah specimens to ensure their longevity and enables establishment of new Moonah for long term succession.
6. Increased tree planting along top of hill enhances the dramatic and iconic natural amphitheatre feel of the grass slope.
7. Slope kept clear to ensure heritage protected Norfolk Island pines are still celebrated/privileged.



A	FINAL DRAFT	PW	3/08/2021				
B	FINAL VERSION	PW	23/08/2021				
REV	DESCRIPTION	BY	DATE	REV	DESCRIPTION	BY	DATE



CLIENT
GREAT OCEAN ROAD COAST AND PARKS AUTHORITY

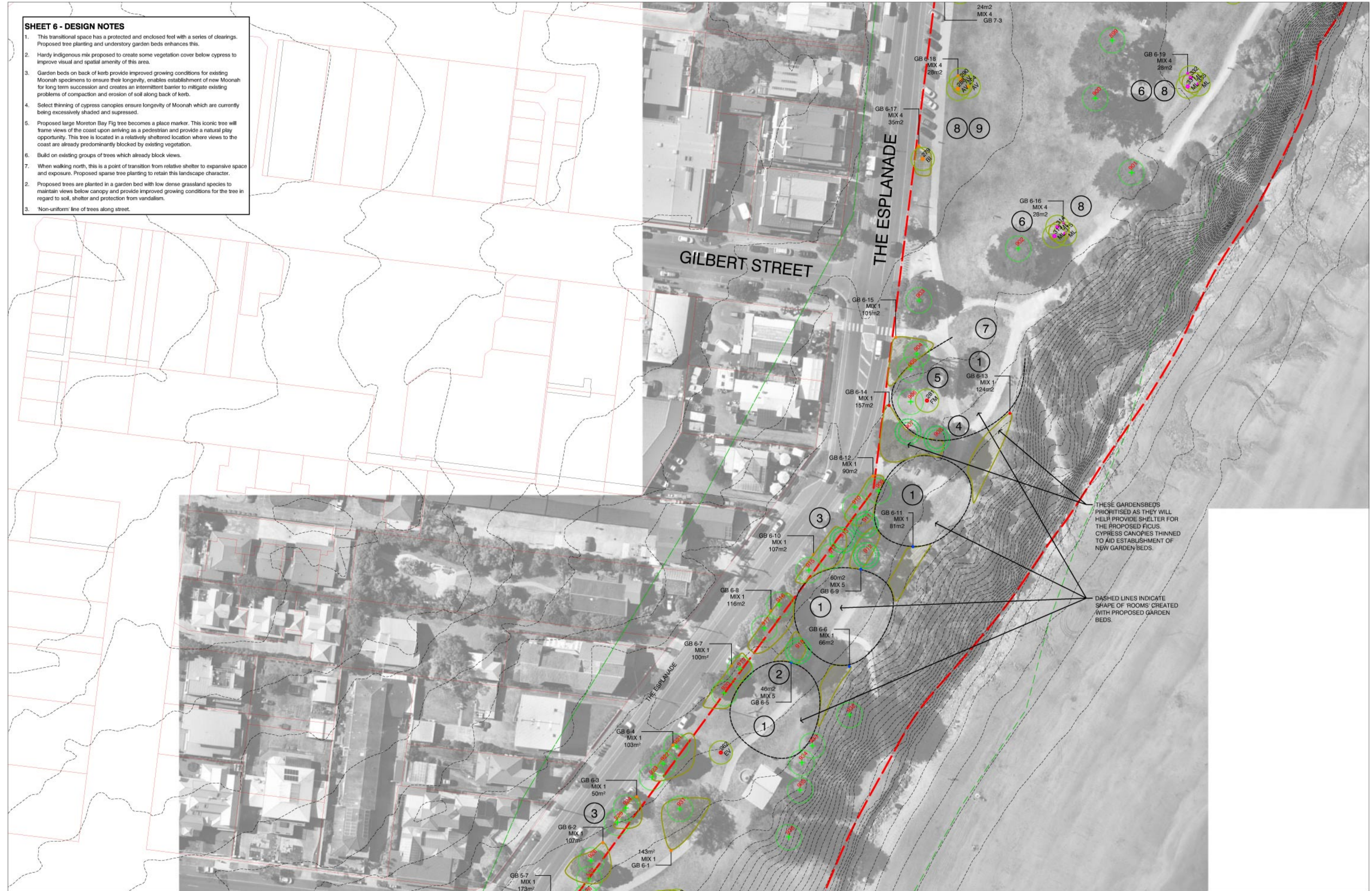
PROJECT
TORQUAY TREE PLAN

TITLE
TREE & REVEGETATION PLAN

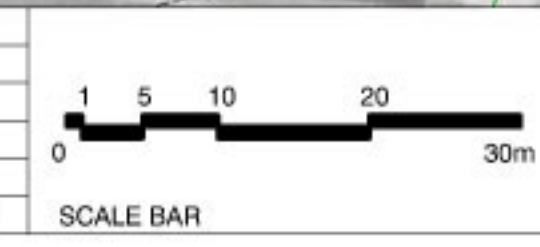
CREATED	Feb-21	SCALE	A1: 1:500 A2: 1:1000
STATUS	DRAFT		
DRAWN	PW	CHECKED	DS
APPROVED	PW	JOB No.	2101
DRAWING No.	SHEET 5	REV	B

SHEET 6 - DESIGN NOTES

1. This transitional space has a protected and enclosed feel with a series of clearings. Proposed tree planting and understory garden beds enhances this.
2. Hardy indigenous mix proposed to create some vegetation cover below cypress to improve visual and spatial amenity of this area.
3. Garden beds on back of kerb provide improved growing conditions for existing Moonah specimens to ensure their longevity, enables establishment of new Moonah for long term succession and creates an intermittent barrier to mitigate existing problems of compaction and erosion of soil along back of kerb.
4. Select thinning of cypress canopies ensure longevity of Moonah which are currently being excessively shaded and suppressed.
5. Proposed large Moreton Bay Fig tree becomes a place marker. This iconic tree will frame views of the coast upon arriving as a pedestrian and provide a natural play opportunity. This tree is located in a relatively sheltered location where views to the coast are already predominantly blocked by existing vegetation.
6. Build on existing groups of trees which already block views.
7. When walking north, this is a point of transition from relative shelter to expansive space and exposure. Proposed sparse tree planting to retain this landscape character.
2. Proposed trees are planted in a garden bed with low dense grassland species to maintain views below canopy and provide improved growing conditions for the tree in regard to soil, shelter and protection from vandalism.
3. 'Non-uniform' line of trees along street.



A	FINAL DRAFT	PW	3/08/2021				
B	FINAL VERSION	PW	23/08/2021				
REV	DESCRIPTION	BY	DATE	REV	DESCRIPTION	BY	DATE



CLIENT
GREAT OCEAN ROAD COAST AND PARKS AUTHORITY

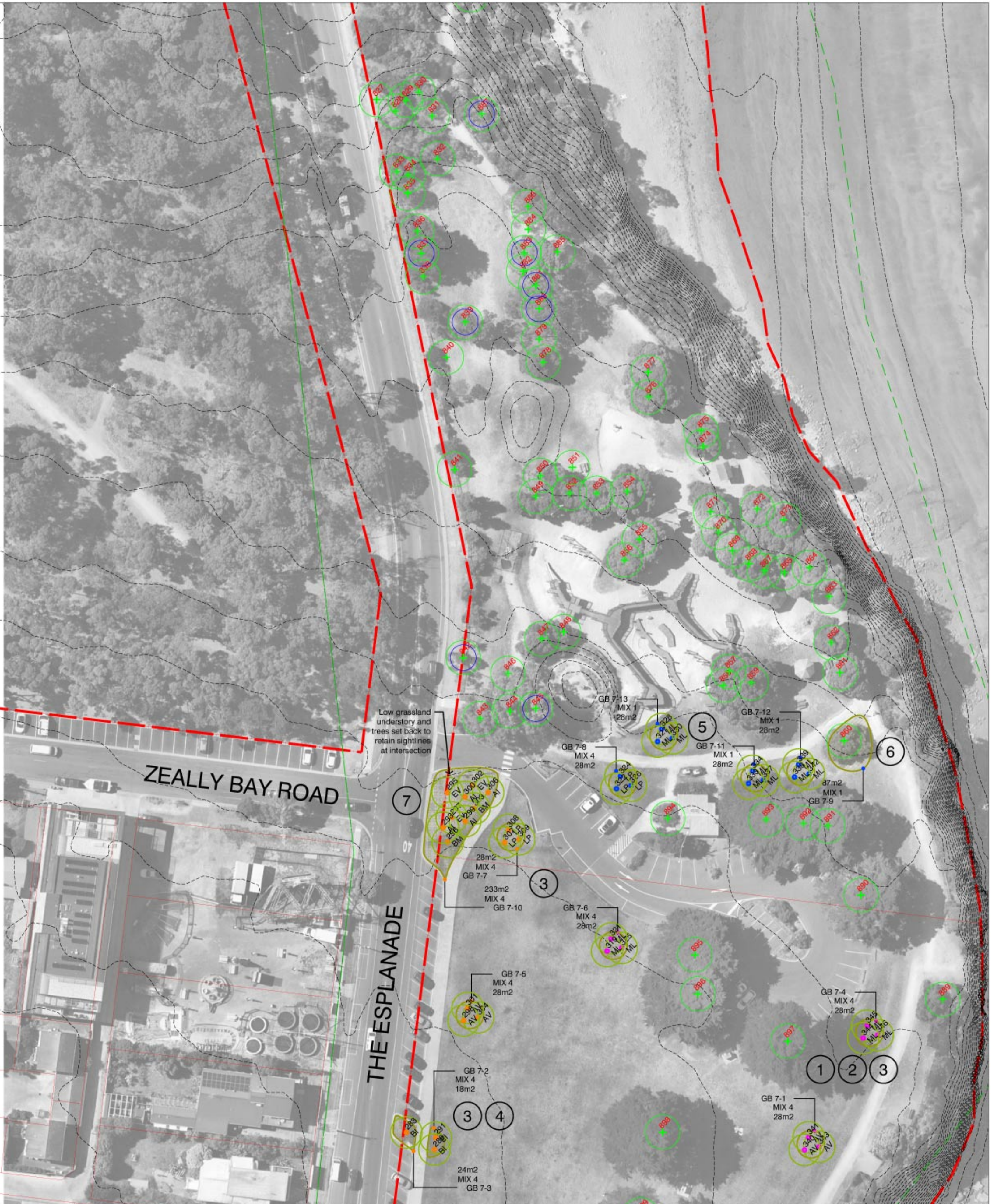
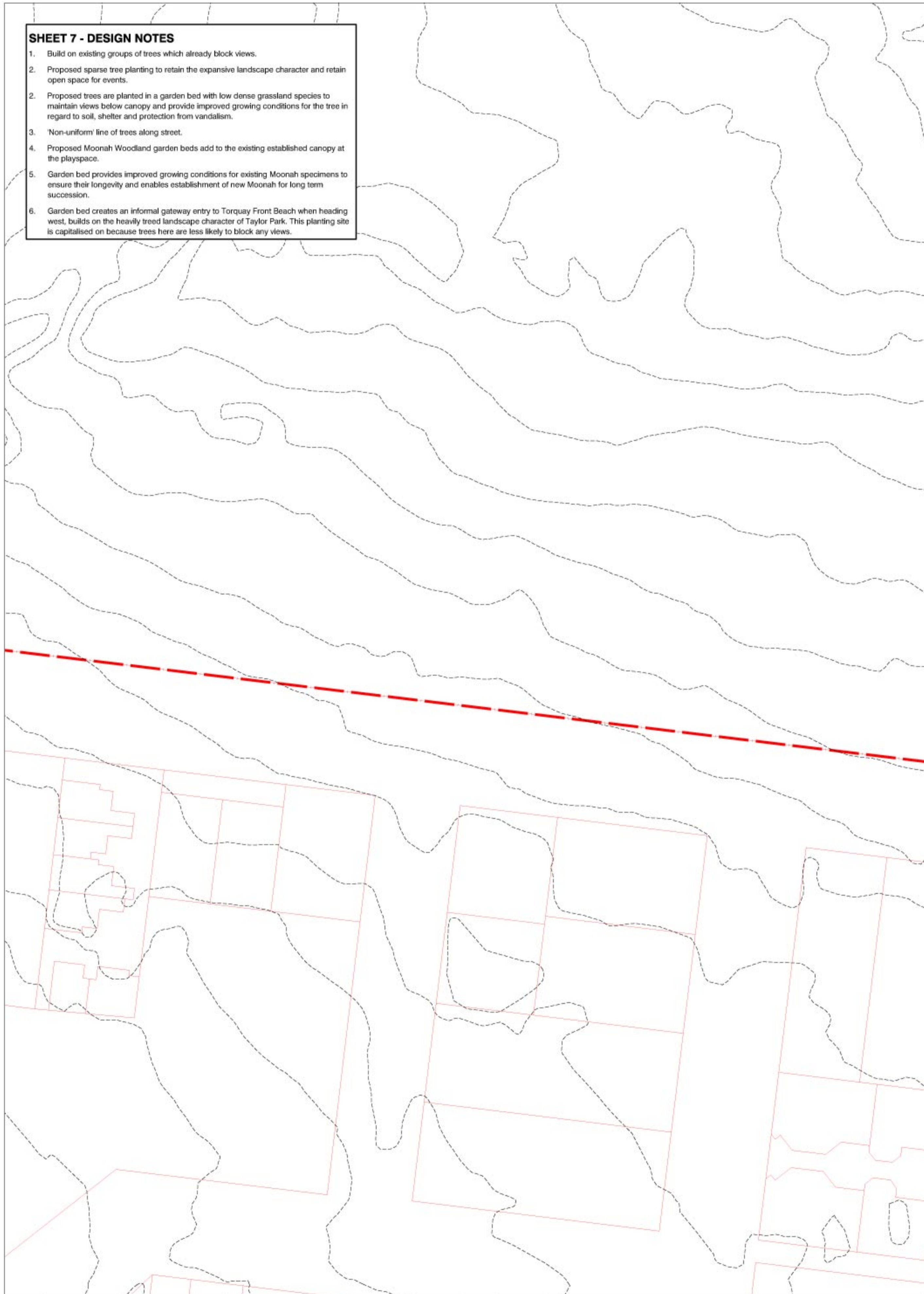
PROJECT
TORQUAY TREE PLAN

TITLE
TREE & REVEGETATION PLAN

CREATED	Feb-21	SCALE	A1: 1:500 A2: 1:1000
STATUS	DRAFT		
DRAWN	PW	CHECKED	DS
APPROVED	PW	JOB No.	2101
DRAWING No.	SHEET 6	REV	B

SHEET 7 - DESIGN NOTES

1. Build on existing groups of trees which already block views.
2. Proposed sparse tree planting to retain the expansive landscape character and retain open space for events.
2. Proposed trees are planted in a garden bed with low dense grassland species to maintain views below canopy and provide improved growing conditions for the tree in regard to soil, shelter and protection from vandalism.
3. 'Non-uniform' line of trees along street.
4. Proposed Moonah Woodland garden beds add to the existing established canopy at the playspace.
5. Garden bed provides improved growing conditions for existing Moonah specimens to ensure their longevity and enables establishment of new Moonah for long term succession.
6. Garden bed creates an informal gateway entry to Torquay Front Beach when heading west, builds on the heavily treed landscape character of Taylor Park. This planting site is capitalised on because trees here are less likely to block any views.



A	FINAL DRAFT	PW	3/08/2021				
B	FINAL VERSION	PW	23/08/2021				
REV	DESCRIPTION	BY	DATE	REV	DESCRIPTION	BY	DATE



CLIENT
GREAT OCEAN ROAD COAST AND PARKS AUTHORITY

PROJECT
TORQUAY TREE PLAN

TITLE
TREE & REVEGETATION PLAN

CREATED	Feb-21	SCALE	A1: 1:500
STATUS	DRAFT	A3: 1:1000	
DRAWN	PW	CHECKED	DS
APPROVED	PW	JOB No.	2101
DRAWING No.	SHEET 7		REV B