

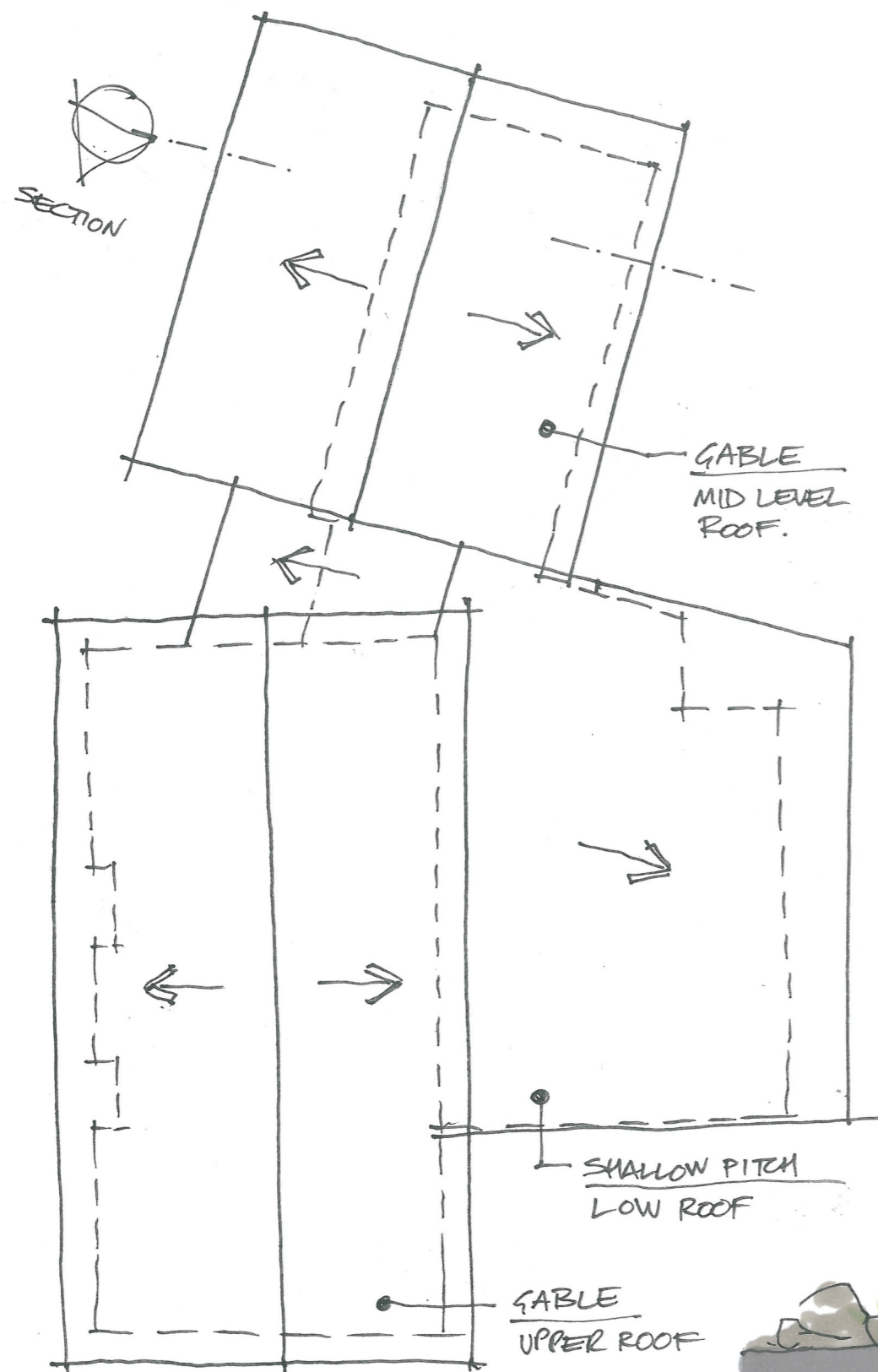


PERSPECTIVE

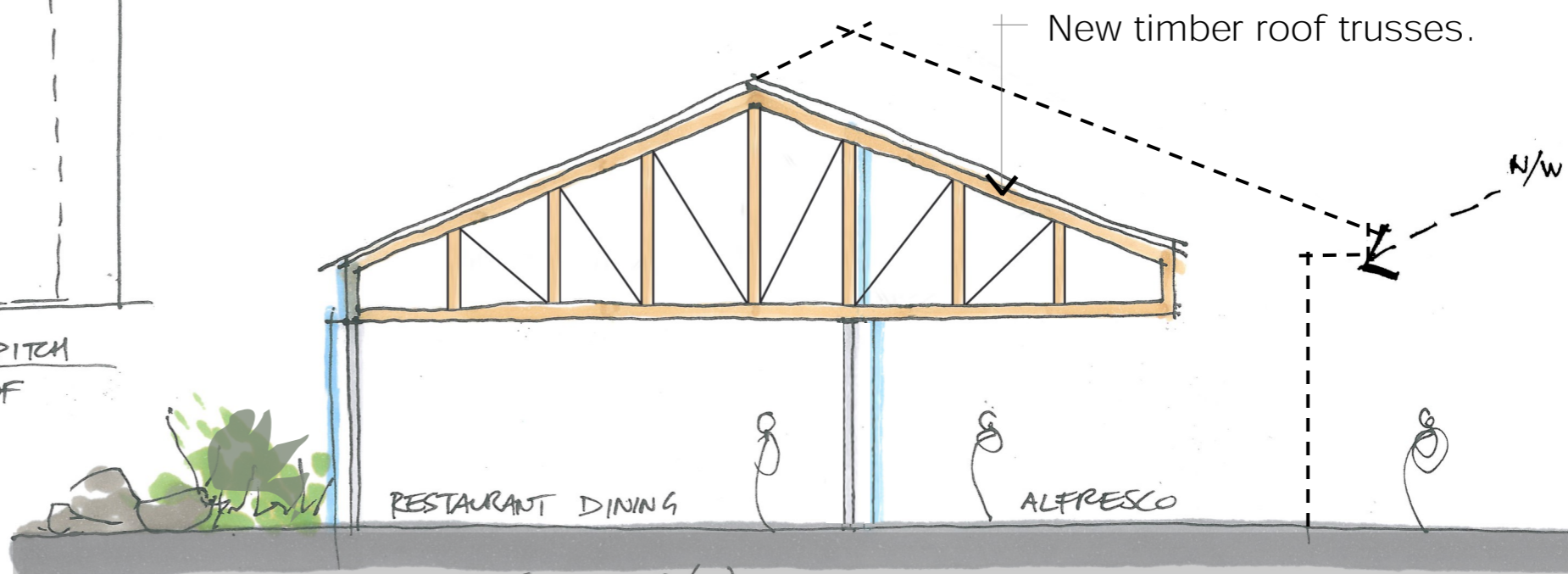
THE CO-OP
POINT GREY LORNE

11 FEBRUARY 2022

BALDASSO CORTESE



ROOF PLAN



SECTION

THE CO-OP

POINT GREY LORNE

11 FEBRUARY 2022

BALDASSO CORTESE

ACACIA MELANOXYLON TREES TO ENTRANCE

PROPOSED SITE & LANDSCAPE PLAN

GABION CLAD CONCRETE SLEEPER RETAINING WALL TO FORM ENGINEERING DETAIL



SITE PLAN OVERLAY

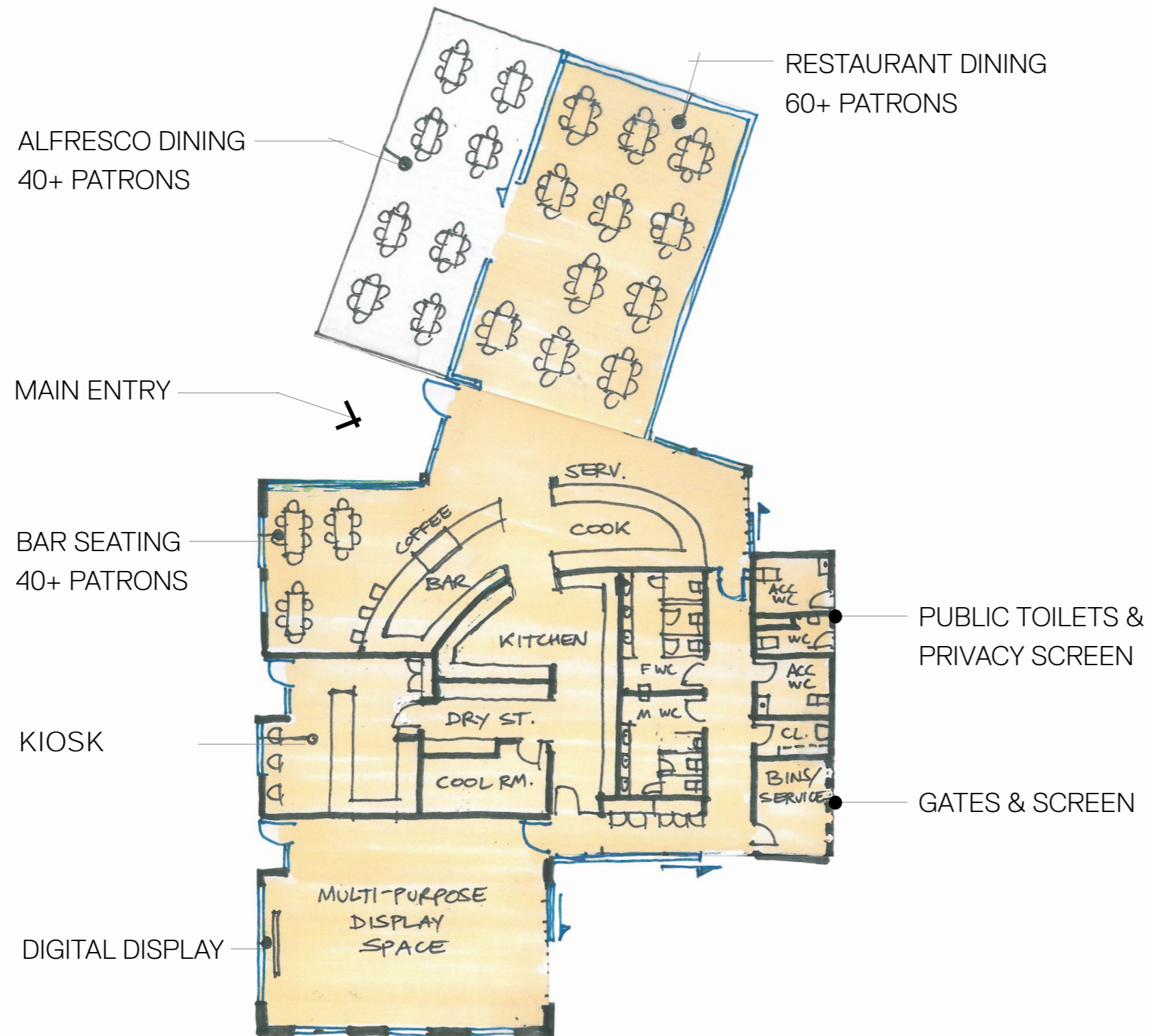
THE CO-OP

POINT GREY LORNE

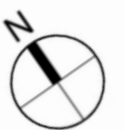
11 FEBRUARY 2022

BALDASSO CORTESE

NOTE: THE COMMUNITY CO-DESIGN GROUP HAS NOT REVIEWED OR ENDORSED THE WIDER SITE PLAN



0 1 2 3 4 5 (m)
1:200 @ A3



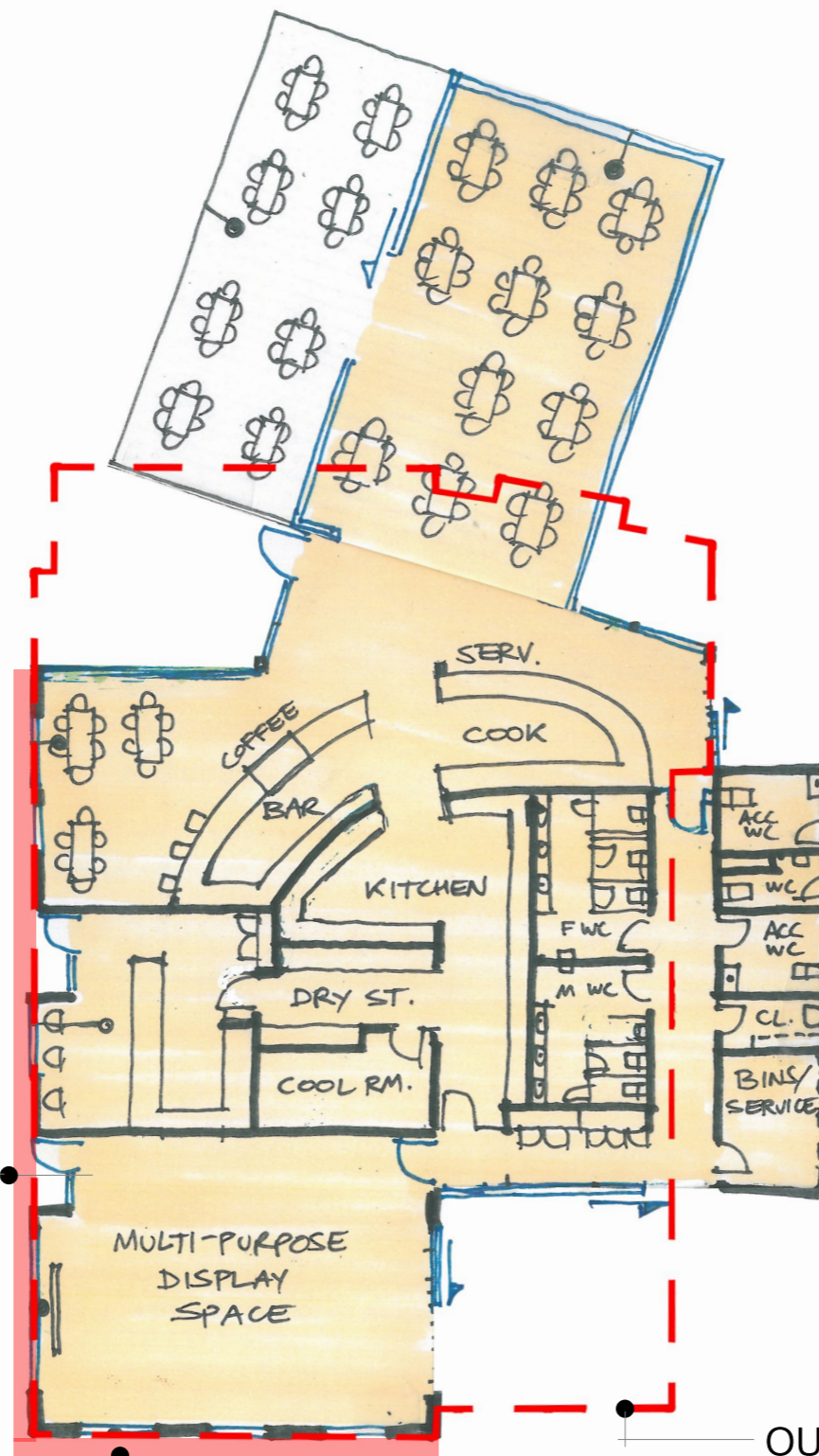
FLOOR PLAN

THE CO-OP

POINT GREY LORNE

11 FEBRUARY 2022

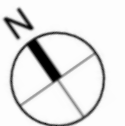
BALDASSO CORTESI



EXISTING EXTERNAL WALLS
OF THE CO-OP BUILDING TO
BE REBUILT USING SALVAGED
& SANDBLASTED BRICKS

OUTLINE OF THE
EXISTING FISHING
CO-OP BUILDING
TO BE DEMOLISHED

0 1 2 3 4 5 (m)
1:200 @ A3



FLOOR PLAN OVERLAY

THE CO-OP

POINT GREY LORNE

11 FEBRUARY 2022

BALDASSO CORTESE